

# RV TOW Harness Wiring Kit

## INSTALLATION INSTRUCTIONS

Fits: RAM 1500 w/ LED Taillights

Kit Includes:

- (1) Wiring Harness with 4-Flat Connector
- (1) 48" 4-Flat Extension
- (20) 15" Cable Tie
- (1) 4-Flat Bracket
- (3) #8 Self-Tapping Ground Screw

## RV TOW HARNESS

### INSTALLATION INSTRUCTIONS

1. Read instructions thoroughly before beginning.
2. Open the rear tailgate and using a Torx T20 screwdriver remove screws that hold both taillight assemblies to vehicle shown in **Figure 1**. Slide red connector locks and unplug connectors and inspect for dirt and debris and clean if necessary.



Figure 1

3. Starting on driver's side position the RV harness with connectors containing Yellow wires up from behind taillight opening and between separated vehicle harness connectors shown in **Figure 2**. Press connectors firmly into the vehicle connectors until they lock into place. Pull on connectors to ensure the locks are engaged.



4. Locate a clean and accessible mounting location on the vehicle near the RV harness ends within reach of white wire and ring terminal. Remove any debris or undercoating to expose a clean metal surface and drill a 3/32" hole.

**\*Caution: Take care not to drill through the body or any exposed surface.\***

5. Attach ring terminal on the White wire using the ground screw provided.
6. Cut the cable ties on 4-Flat portion of harness. Route the remaining portion of the RV harness with connector ends containing the Green wire through the opening behind the taillight.
7. Route the portion of harness with the T-Connector ends containing Green wire to the Passenger side along the rear frame rail and secure the conduit to the existing factory wire harness shown in **Figure 3** with the cable ties provided.

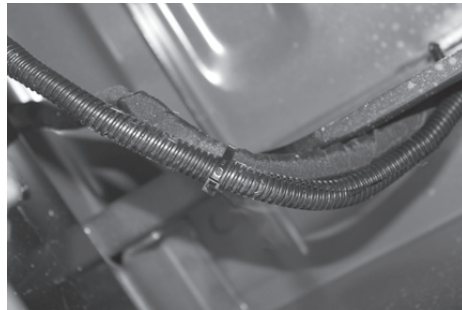


Figure 3

8. Using a fish tape or stiff wire route the portion of harness with the T-Connector ends containing Green wire up through the passenger side opening. Once T-Connector ends are routed into the taillight cavity repeat Step 3 for plugging
9. Back on driver's side route the 4-Flat portion of the RV harness along factory harness located on frame rail to front of vehicle securing with cable ties along the way up to drivers side front wheel well.

**Caution: Make sure to avoid areas that contain moving parts or could cut, pinch or burn the wires when routing the 4-flat harness towards the front of the vehicle. Also avoid routing harness near the fuel lines as it may cause the fuel to ignite.**

**Failure to follow these warnings may cause property damage, personal injury or loss of life.**

10. Using a 8mm socket remove bolt on drivers side wheel well area shown in **Figure 5**. Starting at the left side of driver's side wheel well route a fish tape up and over to the right side. Secure 4-Flat connector to it and pull through wheel well cover.

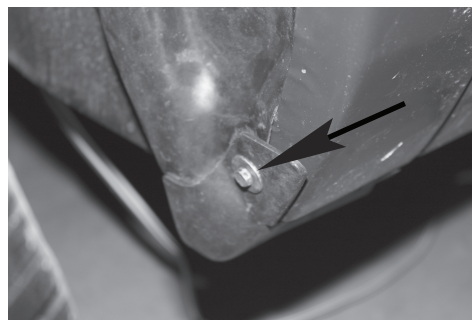


Figure 5

11. Locate the front frame rail that goes across the front of the vehicle. Locate a suitable position to mount the 4-Flat bracket shown in **Figure 6**. Using the bracket as a template mark the two holes and drill two 3/32" holes and attach the bracket using the two remaining screws.
- \*Caution: Take care not to drill through the body or any exposed surface.\***

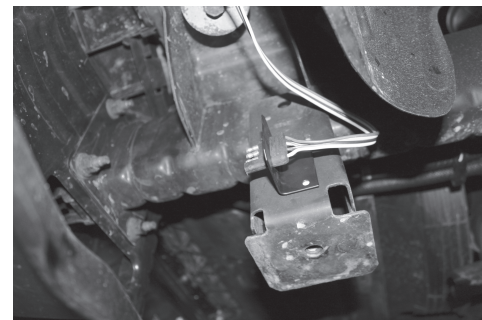


Figure 6

12. With the 4-flat extension plugged into the RV harness on one end and the motorhome on the other, test that the functions work on the RAM 1500. These functions will only work on the brake/tail combination lamp.

4-Flat Harness Color Code:

- White - Ground
- Brown - Tail Lights
- Green - Right Turn and Brake Signal
- Yellow - Left Turn and Brake Signal

When not in use store the 4-flat extension in the vehicles glove box.

13. At the rear of the vehicle secure any loose wires to the vehicle's crossmember using cable ties provided. Re-install taillights to vehicle.